

# Pointhouse

## **CLOE 5**

Design **Pointhouse**

**Scheda tecnica**  
***/Technical sheet***



## Sedia composta da due modelli di fusto differenti con seduta in multistrato di faggio rivestita in tessuto, ecopelle o pelle

La famiglia Cloe è composta da due modelli di fusti differenti tra loro:

- Cloe 3, fusto in filo
- Cloe 5, fusto in legno massello di frassino tinto rovere

La sua estrema comodità, le linee essenziali ed il rivestimento in tessuto, similpelle o pelle, la rendono adatta ad ogni tipo di ambiente, sia per la casa che per ambienti contract.

## / Chair with fabric, similar leather or leather covered seat and three legs solution

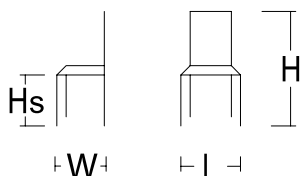
*Cloe family is composed by two models that differentiate for the structure:*

- *Cloe 3, wire structure*
- *Cloe 5, oak painted solid ash structure*

*It's extreme comfort, essential lines and the fabric, similar leather or leather cover make this chair to be suitable both for your home as well as contract spaces.*

### MISURE / SIZE:

**L.45XW.53XHS.46XH.84**



### PESO & IMBALLO / WEIGHT & PACKING:



Numero colli  
Boxes number

### CLOE 5

Box: 52x63x59  
m3 0,193  
tot. Kg. 12

**FINITURE / FINISHES:**

**Struttura e gambe / Structure and legs:**

legno  
wood



**31** ROVERE NATURALE  
NATURAL OAK



**34** ROVERE COTTO  
BURNISHED OAK



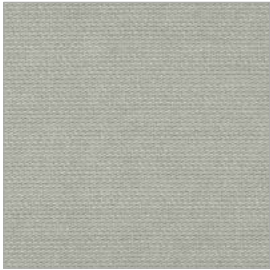
**37** ROVERE GRAFITE  
GRAPHITE OAK

**FINITURE / FINISHES:**

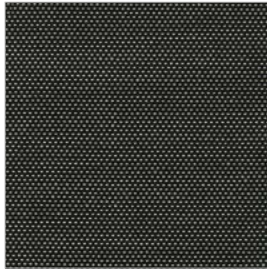
**Seduta / seat:**

Tessuto / Ecopelle / Pelle  
Fabric / Similar leather / Leather

**Tessuto Angel Trick / Angel Trick fabric**



**T101**



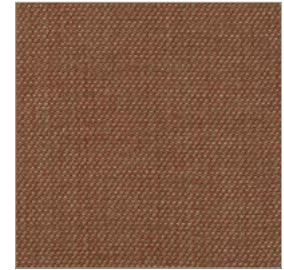
**T221**



**T301**



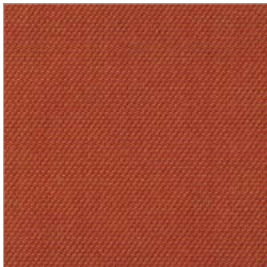
**T302**



**T303**



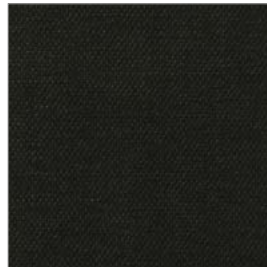
**T304**



**T306**



**T400**



**T406**



**T701**



**T702**



**T703**



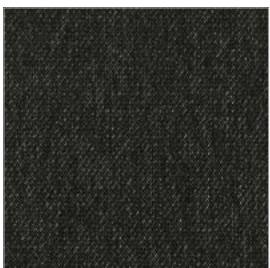
**T704**



**T801**



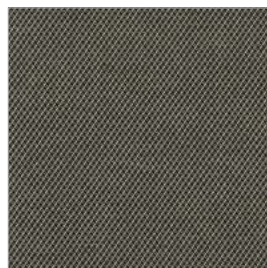
**T803**



**T204**



**T405**



**T602**



**T900**



# abitex

abitex srl  
via del cristo 84  
33044 manzano  
ud - italy

t +39 0432 746060  
www.abitex.eu  
info@abitex.eu

# angel trick 08163



## IT

### codice doganale

54072011.

### utilizzo

tende, imbottiti.

### caratteristiche

100% polipropilene, altezza cm  $\pm$  140,  
peso  $\pm$  350 gr/m<sup>2</sup>.

### tintura

il prodotto é tinta in massa.

### lunghezza pezze

circa 35 mtl.

### abrasione

50.000 cicli, ISO 12947-2.

### solidità alla luce

4-5, ISO 105 B02.

### solidità allo sfregamento

secco 5, umido 4/5, ISO 105 X12.

### resistenza alla cucitura

ordito 3 mm, trama 2 mm, ISO 13936-2.

### pilling

4-5, ISO 12945-2.

### resistenza al fuoco

1IM - UNI 9175; EN 1021 1/2; BS 5852 crib 5;

NF D 60 013; California TB 117-2013;

IMO FTP Code 307 part 8.

### attenzione

sono ammesse leggere differenze di colore tra differenti partite.

## EN

### customs code

54072011.

### use

curtains, upholstered furniture.

### features

100% polypropylene, width cm  $\pm$  140,  
weight  $\pm$  350 g/m<sup>2</sup>.

### dyeing

solution dyed product.

### roll length

approx. 35 lm.

### abrasion resistance

50.000 rubs, ISO 12947-2.

### colour fastness to light

4-5, ISO 105 B02.

### fastness to rubbing

dry 5, wet 4/5, ISO 105 X12.

### seam slippage

warp 3 mm, weft 2 mm, ISO 13936-2.

### pilling

4-5, ISO 12945-2.

### fire resistance

1IM - UNI 9175; EN 1021 1/2; BS 5852 crib 5;

NF D 60 013; California TB 117-2013;

IMO FTP Code 307 part 8.

### attention

slight colour differences between different batches are allowed.



fireproof



imo-med

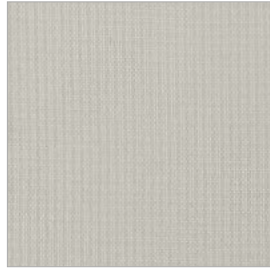
**Tessuto Flash Nativa /Flash Nativa fabric**



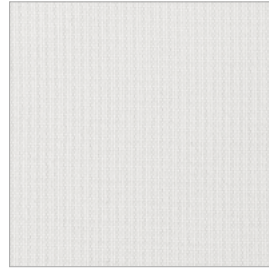
**F001**



**F002**



**F101**



**F111**



**F200**



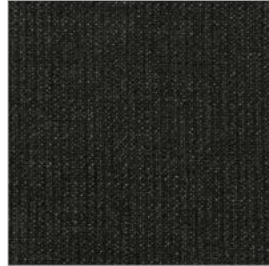
**F300**



**F301**



**F305**



**F403**



**F500**



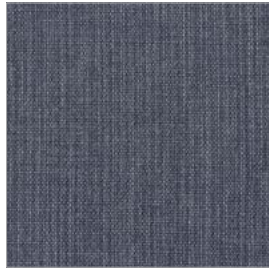
**F601**



**F700**



**F705**



**F707**



**F800**



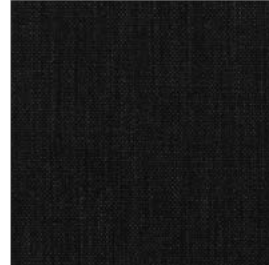
**F804**



**F402**



**F600**



**F602**



# abitex

abitex srl  
via del cristo 84  
33044 manzano  
ud - italy

t +39 0432 746060  
www.abitex.eu  
info@abitex.eu

# flash nativa

## 08091



### IT

**codice doganale**

54072011.

**utilizzo**

imbottiti.

**caratteristiche**

100% polipropilene, altezza cm  $\pm$  140,  
peso  $\pm$  320 gr/m<sup>2</sup>.

**tintura**

il prodotto é tinta in massa.

**lunghezza pezze**

circa 35 mtl.

**abrasione**

> 70.000 cicli, ISO 12947-2.

**solidità alla luce**

4-5, ISO 105 B02.

**solidità allo sfregamento**

secco 5, umido 4/5, ISO 105 X12.

**resistenza alla cucitura**

ordito 3 mm, trama 3 mm, ISO 13936-2.

**pilling**

4-5, ISO 12945-2.

**attenzione**

sono ammesse leggere differenze di colore tra differenti partite.

### EN

**customs code**

54072011.

**use**

upholstered furniture.

**features**

100% polypropylene, width cm  $\pm$  140,  
weight  $\pm$  320 g/m<sup>2</sup>.

**dyeing**

solution dyed product.

**roll length**

approx. 35 lm.

**abrasion resistance**

50.000 rubs, ISO 12947-2.

**colour fastness to light**

4-5, ISO 105 B02.

**fastness to rubbing**

dry 5, wet 4/5, ISO 105 X12.

**seam slippage**

warp 3 mm, weft 3 mm, ISO 13936-2.

**pilling**

4-5, ISO 12945-2.

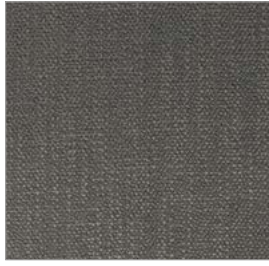
**attention**

slight colour differences between different batches are allowed.

Tessuto M.A.M. / M.A.M. Fabric



**M205** ANTRACITE



**M616** FERRO



**M027** CENERE



**M019** PERLA



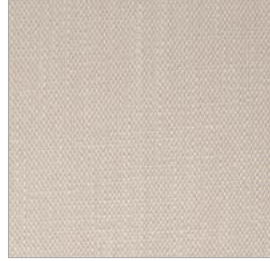
**M014** BLU



**M015** JEANS



**M016** AZZURRO



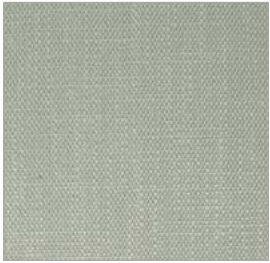
**M105** CIPRIA



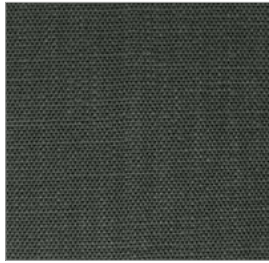
**M023** MALVA



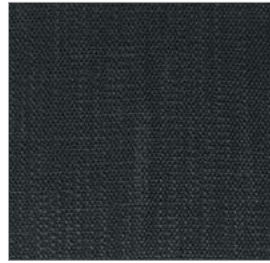
**M080** AMARENA



**M021** PALUDE



**M204** MUSCHIO



**M013** OTTANIO



**M028** GIALLO



**M007** TERRACOTTA



**M002** BISCOTTO



**M001** BEIGE



**M200** NATUR



**M.A.M.**  
tessuti

# 181 Favignana



IT

**altezza**

140 cm

**composizione**

87PL 13VI

**peso mtl**

840 gr

**resistenza al pilling**

4 - ISO 12945 - 2

**resistenza all'abrasione**

50000 metodo martindale BSI 5690

**solidità alla luce**

5 XENO TEST

**note**

Idrorepellente

EN

**hight**

140 cm

**structure composition**

87PL 13VI

**weight mtl**

840 gr

**pilling resistance**

4 - ISO 12945 - 2

**abrasion resistance**

50000 metodo martindale BSI 5690

**fastness to light**

5 XENO TEST

**note**

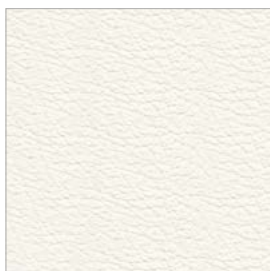
waterproof



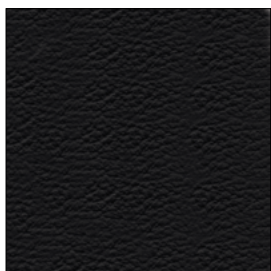
## **Ecopelle / Similar leather**

E' un tessuto che ha l'aspetto della pelle o del cuoio ma non è realizzato con materiale animale. Esso è composto da tessuto su cui viene spalmato del materiale plastico (poliuretano o poliammide) per simulare la superficie del pellame, ciò ne determina una facile pulizia ed impermeabilità.

*It is a fabric that has the look of leather but it is not realized with animal material. This is composed by a fabric on which is spread some plastic material (polyurethane or polyamide) to create the leather surface, that makes it easy to clean and waterproof.*



**48** BIANCO  
WHITE



**49** NERO  
BLACK



**50** TABACCO  
TOBACCO



**51** BLU  
BLUE



**52** TESTA DI MORO  
DARK BROWN



**53** CEMENTO  
CEMENT



**54** GRAFITE  
GRAPHITE



**55** CRETA  
TAUPE



**56** PIOMBO  
OLIVE GREY



**57** BORDEAUX  
BORDEAUX



**58** ROSSO  
RED

**Pelle KEEN /KEEN leather**

Pelle realizzata su bufali, conciata al cromo, tintura all'anilina passante in botte, rifinita all'acqua in tinta unita. Mano morbida di facile utilizzo su qualsiasi tipologia di arredamento. Pelli da mq. 3.8/4 – Spessore 0.9-1.0 mm.

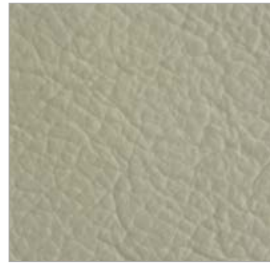
*Leather produced from Buffalo, water finished in solid colours. Soft hand, useful for every application in furnishing. Skins about 3.8/4 sq.m thickness 0.9-1.0 mm.*



**P501**



**P502**



**P503**



**P504**



**P505**



**P506**



**P507**



**P508**



**P509**



**P510**



**P511**



**P512**



**P513**



**P514**



**P515**



**P516**



**P517**



**P842**